

## 1.25G 850nm VCSEL LD TO-CAN Series

### Features:

- Data rates up to 1.25Gb/s
- 850nm multimode emission
- Low threshold and operation current

### Applications:

- Digital Optical Communication

### Specifications:

#### Absolute Maximum Ratings:

Parameter	Symbol	Min.	Max.	Unit
Reverse Voltage	$V_R$	—	5	V
Forward Current	$I_F$	—	12	mA
Optical Output Power	$P_{out}$	—	2.2	mW
MPD reverse voltage	$V_R$	20	—	V
MPD forward current	$V_f$	—	10	mA
Operating Temperature	$T_{op}$	-5	+70	°C
Storage Temperature	$T_{stg}$	-40	+85	°C
Lead Solder Temperature	—	—	260	°C
Lead Solder Time	—	—	10	s

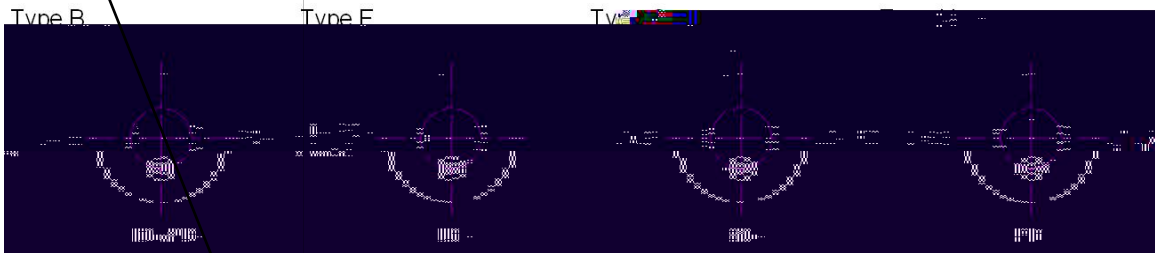
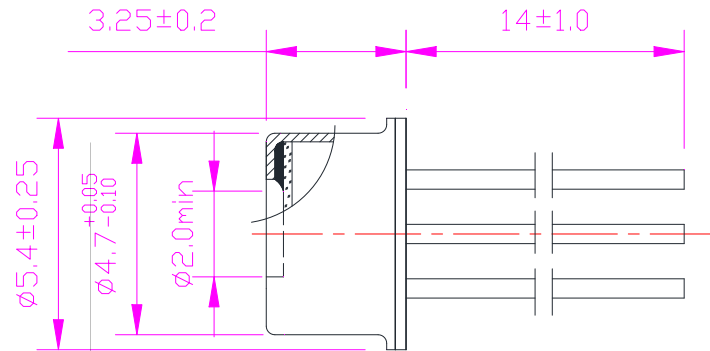
#### Characteristics: ( $T_a=25^\circ\text{C}$ unless otherwise noted)

Parameter	Symbol	Test Conditions	Min.	Typ.	Max.	Unit
Threshold Current	$I_{th}$	$T=25^\circ\text{C}$	0.5	1.0	1.4	mA
Optical Output Power	$P_{out}$	$I_{op} = 6.0\text{mA}$	0.8	1.2	—	mW
Emission Wavelength	$\lambda$	$I_{op} = 6.0\text{mA}$	830	850	860	nm
Spectral Bandwidth, RMS	$\Delta\lambda$	$I_{op} = 6.0\text{mA}$	—	—	0.65	nm
Slope Efficiency	$\eta$	$I_{op} = 6.0\text{mA}$	0.17	0.23	—	W/A
Differential resistance	$R_d$	$I_{op} = 6.0\text{mA}$	—	50	—	$\Omega$
3dB modulation bandwidth	$V_{3dB}$	$I_{op} = 6.0\text{mA}$	3	—	—	GHz
Rise Time	$t_r$	$I_{op} = 6.0\text{mA}$ , 20-80%	—	70	80	ps
Fall Time	$t_f$		—	70	80	ps
Monitor Current(MPD)	$I_m$	$I_{op} = 6.0\text{mA}, V_R=3\text{V}$	150	—	—	$\mu\text{A}$
Dark Current(MPD)	$I_d$	$P_{oc}=0\text{mW}, V_R=3\text{V}$	—	—	20	nA

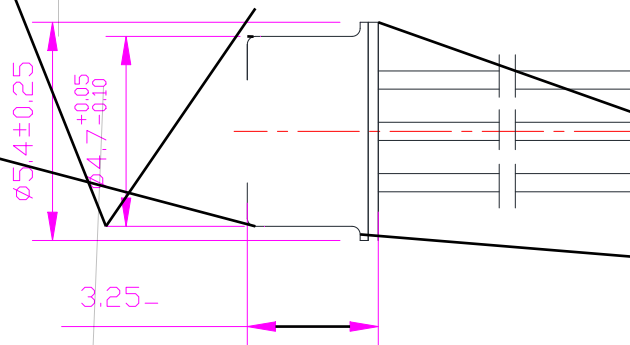


## Mechanical Dimension and Pin Assignment:

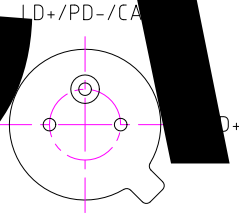
### LD 850nm VCSEL 1.25G-T046-4pin-FW:



### LD 850nm VCSEL 1.25G-T046-3pin-FW:



件 : SU-01-1 A : 20 3



BOTTOM VIEW

### Order Information:

LD 850

### Statement:

SAN-U owns the authority for final explanation of all information contained in this document, which is subject to change without notice. All the information was obtained in particular environments; and SAN-U will not be responsible for the performance of the customers' actual operating environments. All information contained is only for the users' reference and shall not be considered as warranted characteristics. SAN-U will not be liable for damages arising directly or indirectly which from any use of the information contained in this document.

### Contact Information:

Address: N501-505 Weiye Bldg., Xiamen Pioneering Park For Overseas Chinese Scholars, Xiamen, Fujian, China

Tel: +86-592-3898601, 3898608, 5318000

Fax: +86-592-5703588

Email: sales@san-u.com

<http://www.san-u.com>